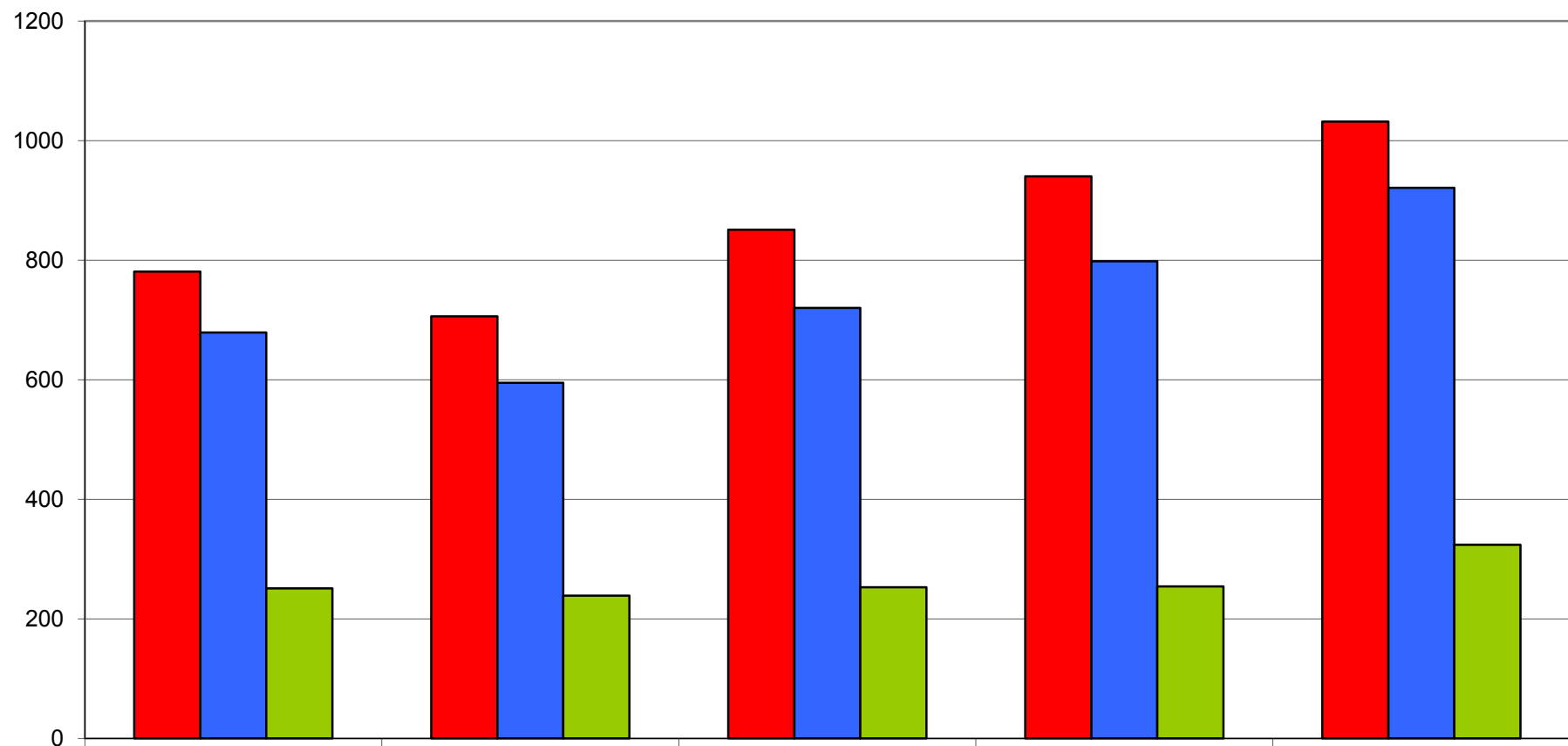
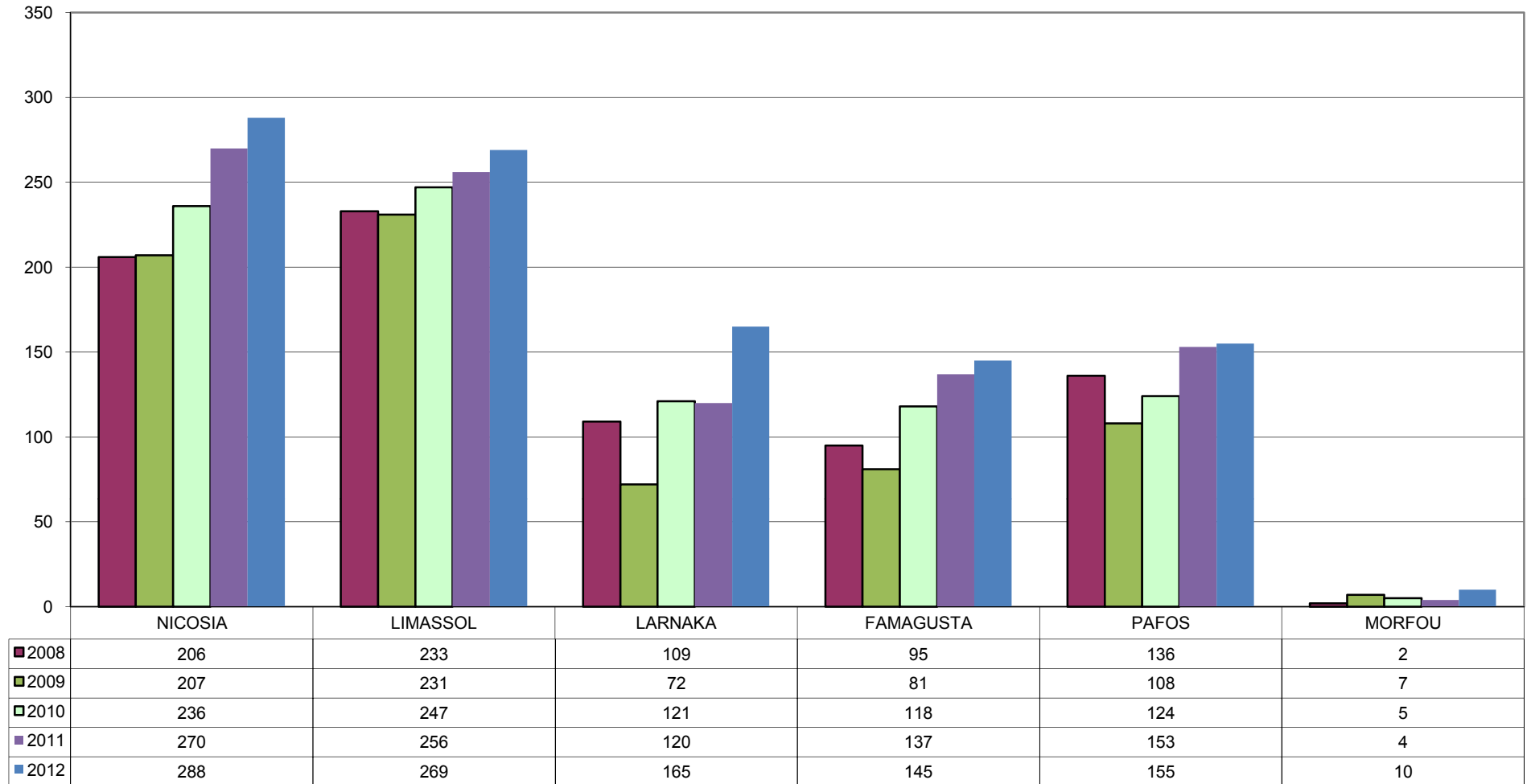


### Drug cases and persons involved per year

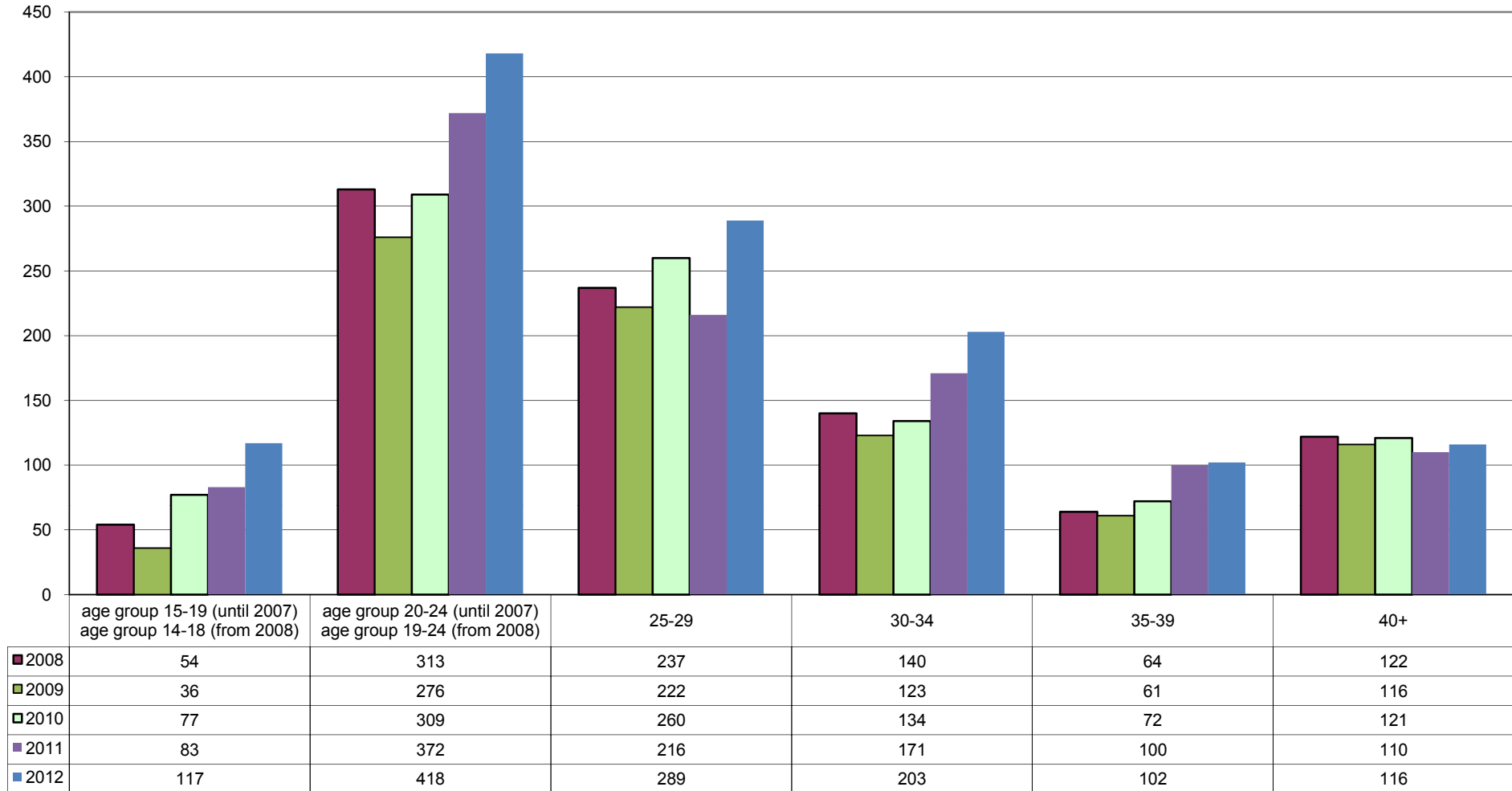


|              |     |     |     |     |      |
|--------------|-----|-----|-----|-----|------|
| ■ Cases      | 781 | 706 | 851 | 940 | 1032 |
| ■ Cypriots   | 679 | 595 | 720 | 798 | 921  |
| ■ Foreigners | 251 | 239 | 253 | 254 | 324  |

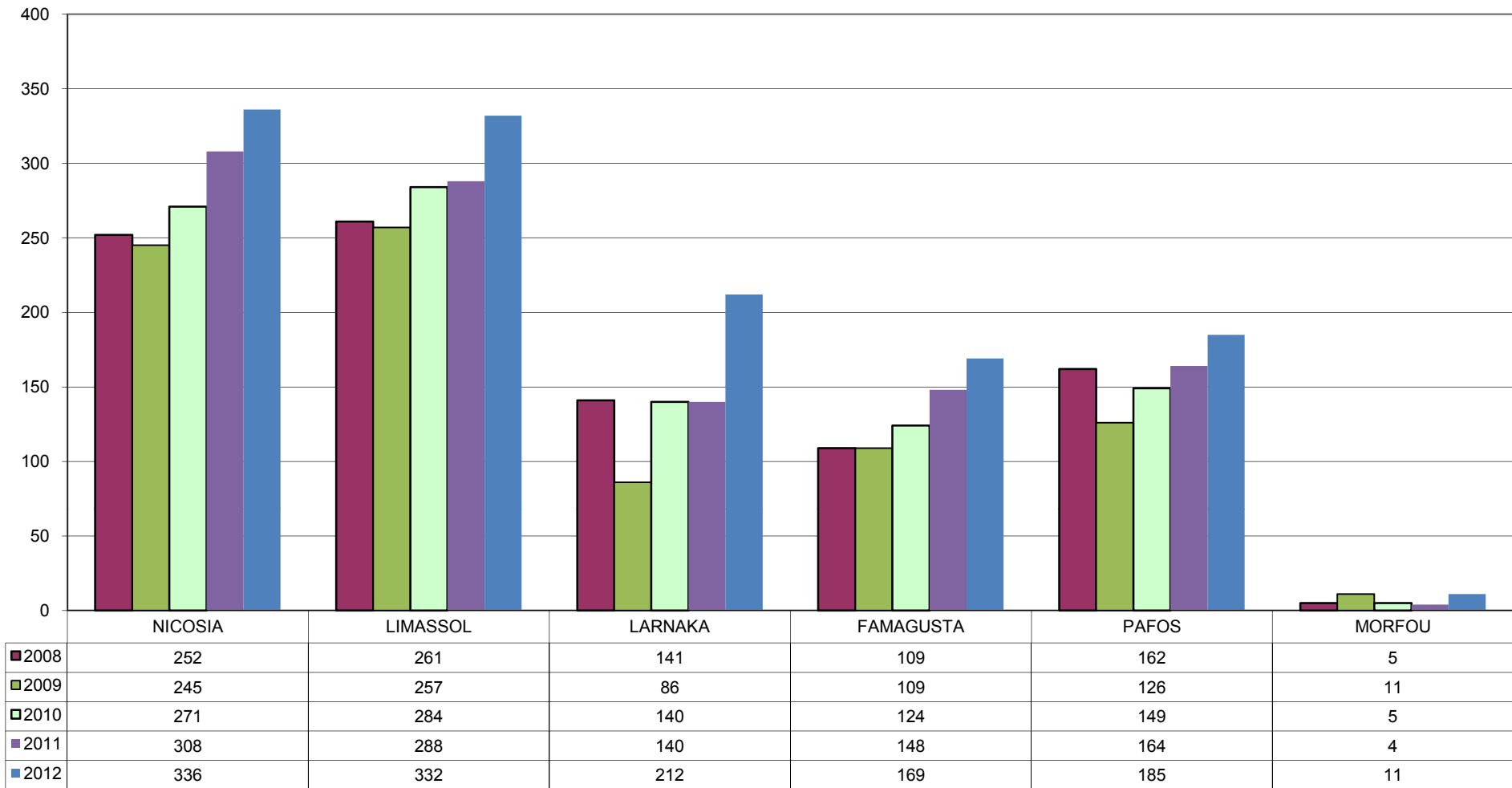
### Cases per district



### Persons involved by age group



### Persons involved per district



**Drug Cases by type of substance and year**

