

**TABLE OF TRAFFIC ACCIDENTS AND VICTIMS BY YEAR**

Year	ACCIDENTS					VICTIMS			
	Fatal	Serious	Slight	Damages	TOTAL	Injuries			TOTAL
						Dead	Serious	Slight	
2011	67	467	524	632	1.690	71	561	992	1.624
2012	51	477	391	573	1.492	51	551	830	1.432
2013	41	355	378	499	1.273	44	407	722	1.173
2014	44	395	319	395	1.153	45	467	603	1.115
2015	56	324	280	298	958	57	377	570	1.004

Source: Analysis and Statistics Office

**TABLE OF TRAFFIC ACCIDENTS AND VICTIMS BY DISTRICT**

Districts	Fatal					Dead				
	2011	2012	2013	2014	2015	2011	2012	2013	2014	2015
Nicosia	25	12	13	16	17	26	12	14	16	17
Famagusta	2	3	1	6	8	2	3	1	7	8
Limasol	16	21	9	9	14	17	21	9	9	15
Larnaka	11	9	12	5	8	11	9	13	5	8
Pafos	11	6	5	6	9	13	6	5	6	9
Morfou	2	0	1	2	0	2	0	2	2	0
<b>TOTAL</b>	<b>67</b>	<b>51</b>	<b>41</b>	<b>44</b>	<b>56</b>	<b>71</b>	<b>51</b>	<b>44</b>	<b>45</b>	<b>57</b>

Source: Analysis and Statistics Office

## FATALITIES BY ROAD USER

Position	2011	2012	2013	2014	2015
Pedestrians	13	10	8	10	16
Drivers	30	20	13	13	19
Car passangers	8	3	6	7	6
Autocyclists	4	3	0	4	1
Autocycle passangers	0	0	0	0	1
Motorcyclists	14	13	14	10	12
Motorcycle passangers	0	1	1	0	1
Bicyclists	2	1	2	1	1
<b>TOTAL</b>	<b>71</b>	<b>51</b>	<b>44</b>	<b>45</b>	<b>57</b>

Source: Analysis and Statistics Office

## FATALITIES IN RELATION TO THE USE OF SEAT BELT

Description	2011	2012	2013	2014	2015
<i>Use of seat belt</i>	10	5	8	6	11
<i>Not use of seat belt</i>	25	18	11	11	14
<i>Not obliged to use seat belt</i>	2	0	0	0	1
<i>Unknown</i>	1	0	0	3	0
<b>TOTAL</b>	<b>38</b>	<b>23</b>	<b>19</b>	<b>20</b>	<b>26</b>

Source: Analysis and Statistics Office

## FATALITIES IN RELATION TO THE USE OF CRASH HELMET

Description	2011	2012	2013	2014	2015
<i>Use of crash helmet</i>	12	8	6	4	4
<i>Not use of crash helmet</i>	6	9	9	8	9
<i>Unknown</i>	0	0	0	2	1
<b>TOTAL</b>	<b>18</b>	<b>17</b>	<b>15</b>	<b>14</b>	<b>14</b>

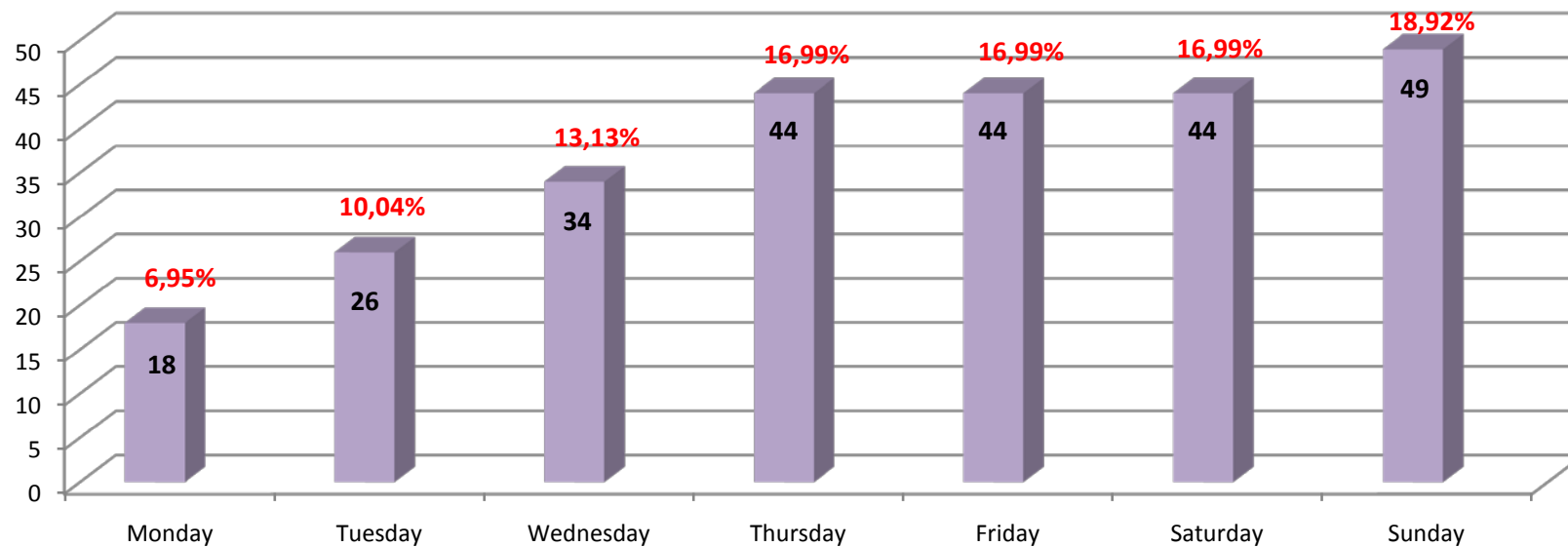
Source: Analysis and Statistics Office

## FATALITIES BY AGE GROUP AND GENDER

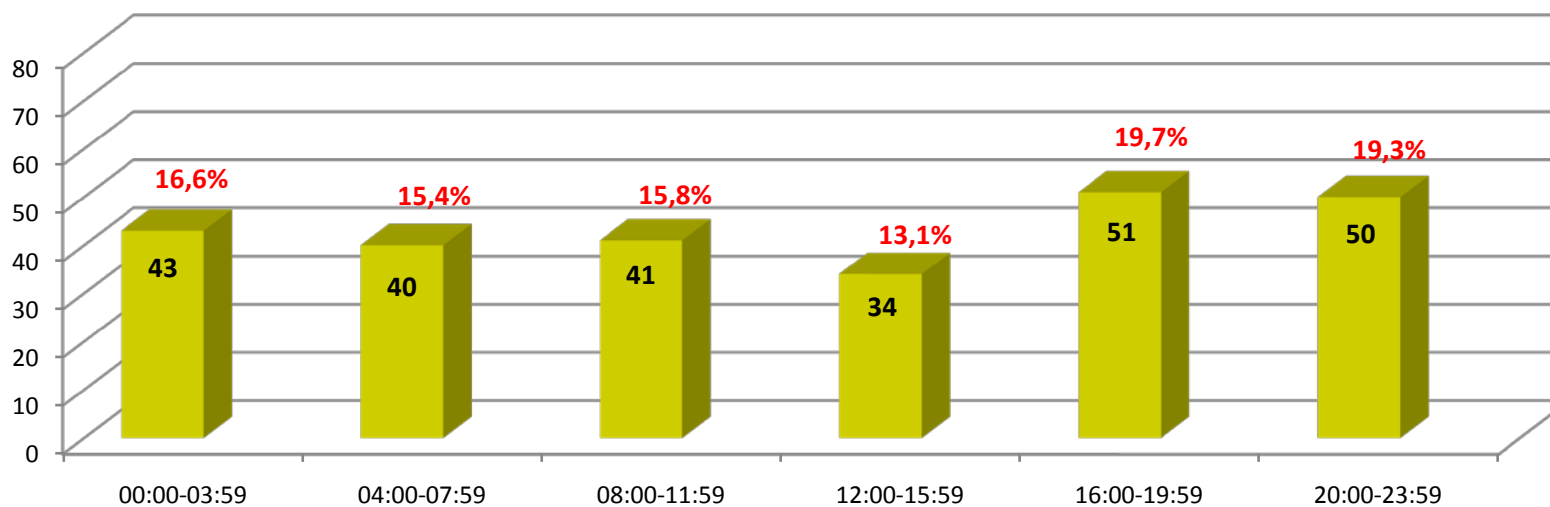
Age Group	2011		2012		2013		2014		2015	
	Male	Female	Male	Female	Male	Female	Male	Female	Male	Female
0-14	1	0	0	0	1	0	0	0	0	1
15-24	13	2	9	3	17	1	11	3	10	2
25-39	19	5	13	4	5	1	10	1	11	6
40-59	12	4	10	3	6	1	4	3	5	4
60+	13	2	5	4	6	6	7	6	10	8
TOTAL	58	13	37	14	35	9	32	13	36	21
	71		51		44		45		57	

Source: Analysis and Statistics Office

Fatals by Day of Occurance, 2011-2015



Fatals by Time of Occurance, 2011-2015



### Fatals by Cause of the accident, 2011-2015

