

**TABLE OF TRAFFIC ACCIDENTS AND VICTIMS BY YEAR**

Year	ACCIDENTS					VICTIMS			
	Fatal	Serious	Slight	Damages	TOTAL	Injuries			TOTAL
						Dead	Serious	Slight	
2010	56	489	652	686	1.883	60	586	1.176	1.822
2011	67	467	524	632	1.690	71	561	992	1.624
2012	51	477	391	573	1.492	51	551	830	1.432
2013	41	355	378	499	1.273	44	407	722	1.173
2014	44	395	319	395	1.153	45	467	603	1.115

Source: Analysis and Statistics Office

**TABLE OF TRAFFIC ACCIDENTS AND VICTIMS BY DISTRICT**

Districts	Fatal					Dead				
	2010	2011	2012	2013	2014	2010	2011	2012	2013	2014
Nicosia	14	25	12	13	16	15	26	12	14	16
Famagusta	7	2	3	1	6	8	2	3	1	7
Limasol	22	16	21	9	9	22	17	21	9	9
Larnaka	6	11	9	12	5	7	11	9	13	5
Pafos	6	11	6	5	6	6	13	6	5	6
Morfou	1	2	0	1	2	2	2	0	2	2
<b>TOTAL</b>	<b>56</b>	<b>67</b>	<b>51</b>	<b>41</b>	<b>44</b>	<b>60</b>	<b>71</b>	<b>51</b>	<b>44</b>	<b>45</b>

Source: Analysis and Statistics Office

## FATALITIES BY ROAD USER

Position	2010	2011	2012	2013	2014
Pedestrians	13	13	10	8	10
Drivers	17	30	20	13	13
Car passangers	7	8	3	6	7
Autocyclists	3	4	3	0	4
Autocycle passangers	0	0	0	0	0
Motorcyclists	16	14	13	14	10
Motorcycle passangers	2	0	1	1	0
Bicyclists	2	2	1	2	1
<b>TOTAL</b>	<b>60</b>	<b>71</b>	<b>51</b>	<b>44</b>	<b>45</b>

Source: Analysis and Statistics Office

## FATALITIES IN RELATION TO THE USE OF SEAT BELT

Description	2010	2011	2012	2013	2014
<i>Use of seat belt</i>	7	10	5	8	6
<i>Not use of seat belt</i>	17	25	18	11	11
<i>Not obliged to use seat belt</i>	0	2	0	0	0
<i>Unknown</i>	0	1	0	0	3
<b>TOTAL</b>	<b>24</b>	<b>38</b>	<b>23</b>	<b>19</b>	<b>20</b>

Source: Analysis and Statistics Office

## FATALITIES IN RELATION TO THE USE OF CRASH HELMET

Description	2010	2011	2012	2013	2014
<i>Use of crash helmet</i>	5	12	8	6	4
<i>Not use of crash helmet</i>	16	6	9	9	8
<i>Unknown</i>	0	0	0	0	2
<b>TOTAL</b>	<b>21</b>	<b>18</b>	<b>17</b>	<b>15</b>	<b>14</b>

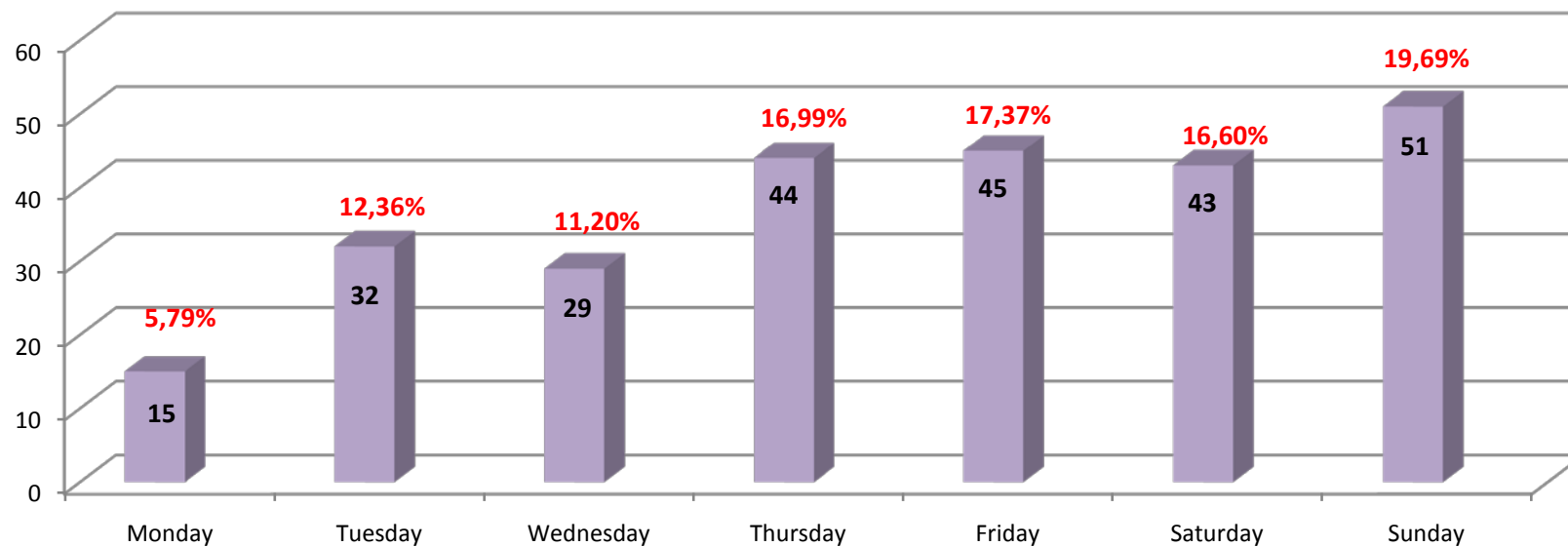
Source: Analysis and Statistics Office

## FATALITIES BY AGE GROUP AND GENDER

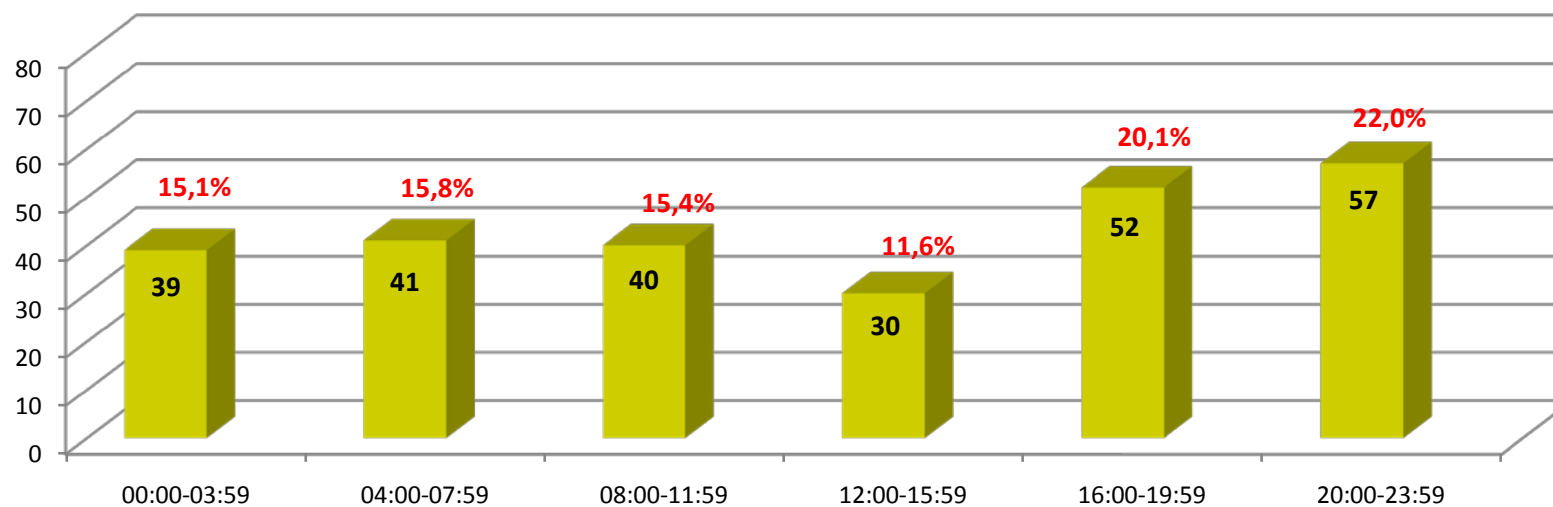
Age Group	2010		2011		2012		2013		2014	
	Άντρες	Γυναίκες	Άντρες	Γυναίκες	Άντρες	Γυναίκες	Άντρες	Γυναίκες	Άντρες	Γυναίκες
0-14	0	1	1	0	0	0	1	0	0	0
15-24	13	1	13	2	9	3	17	1	11	3
25-39	21	1	19	5	13	4	5	1	10	1
40-59	10	1	12	4	10	3	6	1	4	3
60+	6	6	13	2	5	4	6	6	7	6
TOTAL	50	10	58	13	37	14	35	9	32	13
	60		71		51		44		45	

Source: Analysis and Statistics Office

Fatals by Day of Occurance, 2010-2014



Fatals by Time of Occurance, 2010-2014



### Fatals by Cause of the accident, 2010-2014

